

Anchor[®]



Wonderful
wedding cake



AnchorCrafts.com

[f](#) [@](#) [p](#) @anchorcrafting

Designed by Anchor Studio

Design No.: ANC0004-05

MEZ GmbH, 2019. All Rights Reserved.



ANC0004-05 Wonderful wedding cake

Anchor Stranded Cotton No. 4635000-

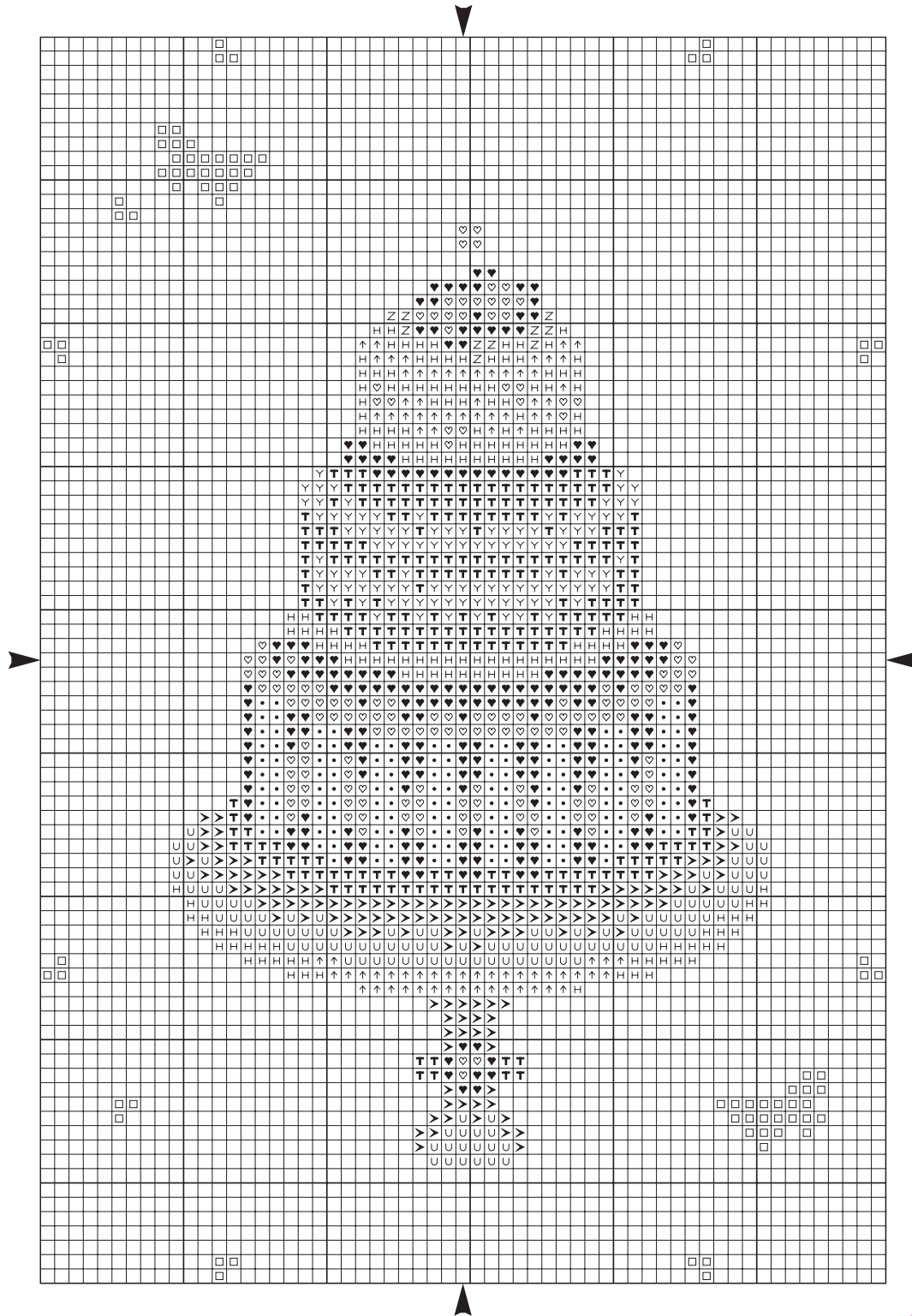


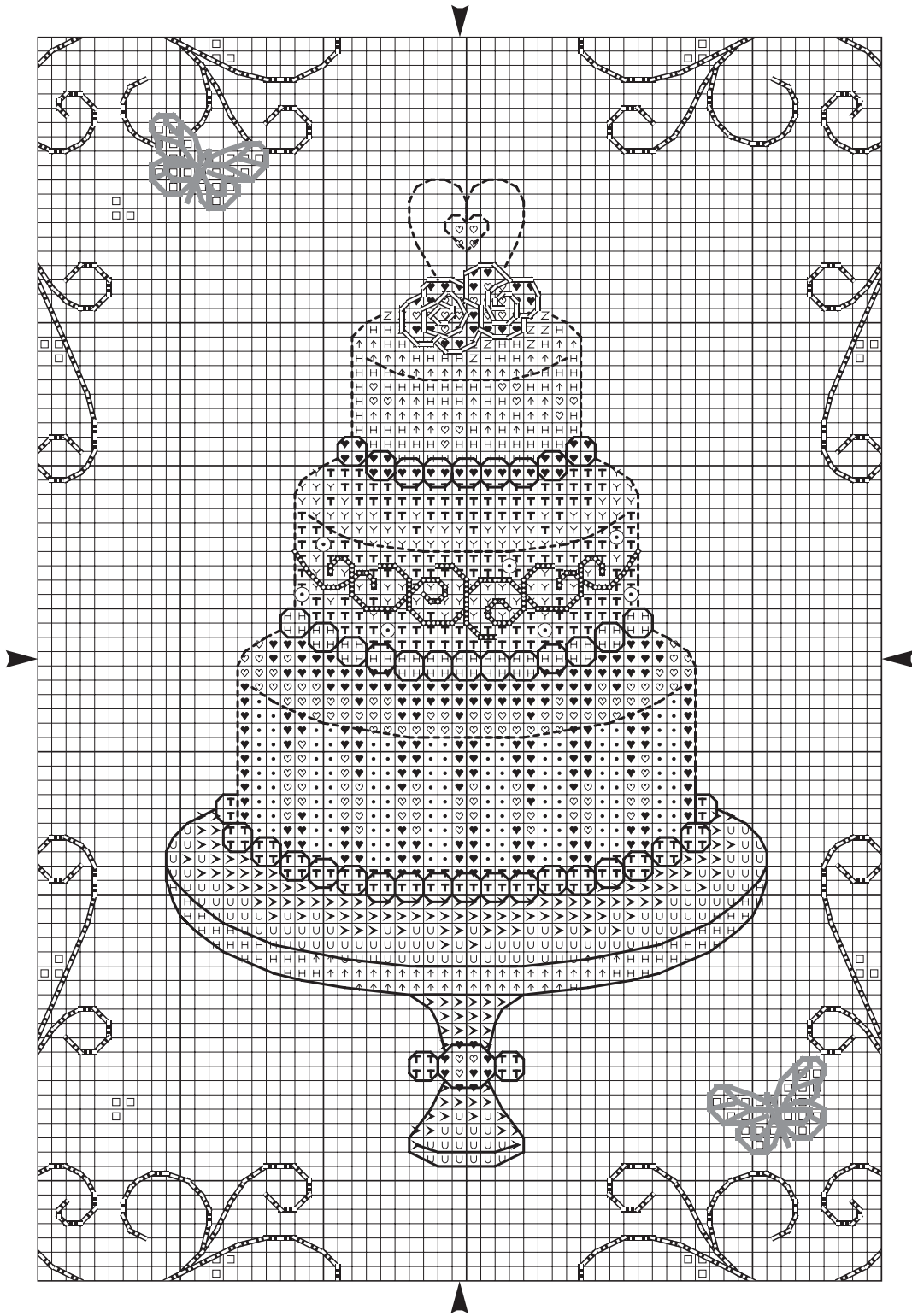
1 x 00001, 00006, 00008, 00158, 00231, 00235, 000265, 00275, 00276, 00300, 00400, 00928, 00933, 00936, 01025

Embroidery

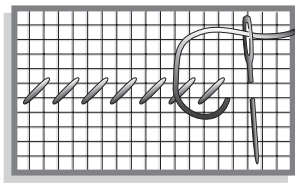


Difficult

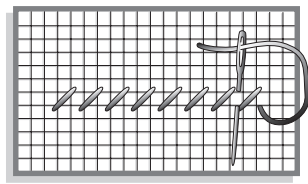




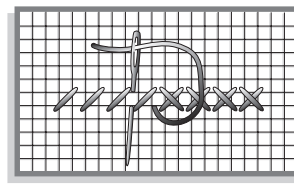
USED STICHES



Step 1

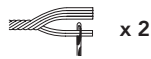


Step 2

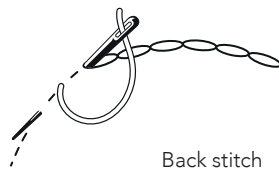
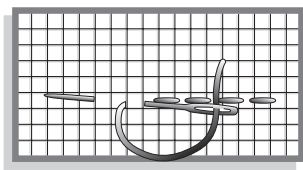


Step 3

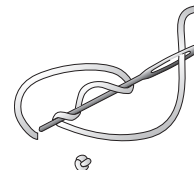
Cross stitch



| | | | | | | | | | | | |
|--|--|---|--|--|-----|--|--|-----|--|--|-----|
| | | 1 | | | 158 | | | 275 | | | 928 |
| | | 6 | | | 231 | | | 276 | | | 933 |
| | | 8 | | | 265 | | | 300 | | | |



Back stitch



French knot



| | | | | | |
|--|--|------|--|--|-----|
| | | 235 | | | 1 |
| | | 400 | | | 231 |
| | | 936 | | | |
| | | 1025 | | | |

GENERAL RECOMMENDATIONS FOR THE PROJECT

Fabric: We recommend an evenweave fabric for Cross Stitch, combined with a tapestry needle of corresponding size. For Freestyle embroidery either a very fine evenweave fabric or closely woven fabric for use with an embroidery/ crewel needle. Obviously needle sizes will depend on fabric.

EMBROIDERY TIPS & TRICKS

Tip: Always work Cross Stitch with a tapestry needle. Always work Cross Stitch first, then Back Stitch and Straight Stitch. Each square on the chart represents one Cross Stitch. The lines/strokes represent Back Stitches.